

# NEWSLETTER 2/2009

FOR MEASURABLE SUCCESS



**Are you the wrong contact person for that Newsletter?  
Or would you like to have someone in your company  
to receive the Newsletter, too?**  
Please email [us](#) the name and email of the contact person.

## What's new?

- \* **STRATEGY & TRAINING EVENTS – Learn about what we can do and become our official service partner**

We will provide another training session in May 2009. The dates are:

**17 to 19 March 2009**  
or  
**5 to 7 May 2009**

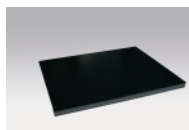
The first day of the training starts at 12 a.m. It will focus on Trade & Commerce and is perfectly suited for our industrial partners. In the evening, we will have dinner and welcome our medical partners, too. The second day gives you an insight into Soehnle Professional' strategic direction for the future. You will learn about existing partnerships and where we can go together. The late afternoon and evening are filled with an entertaining event. Industry partners may feel free to take the journey back home or join the Medicine & Health training on day 3. The training ends with our lunch at 1 p.m.

Demand further details about the training from [us](#)!

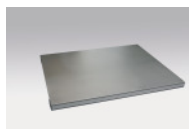
- \* **New product: Medical floor scales 7716, 7717, 7718**

Floor scales to install on the floor or for floor-even installation, **approvable** and with **MPG certificate**. The scales are available as painted, stainless steel, structured, and hinged versions.

> Robust, flat construction



[7716](#)



## Any changes?

- \* **Additional documentation for professional inventory or counting scale 9221**

We have an additional technical documentation of our professional inventory / counting scale 9221. It contains information regarding the parameter setting, the RS 232 interface, calibration and technical parameters.



[9221](#)

Please contact [us](#) to receive the file (English & German)!

Unfortunately, we cannot send the file with this email since some servers then evaluate it as spam and you would not receive the newsletter.

- \* **Lightning arrester equipment for indicators 3010, 3020 and 3030**

If you receive a request for lightning arrester equipment regarding our indicators 3010, 3020 and 3030, we offer the approval certificate for using the additional equipment, which is obligatory. The equipment has to be purchased externally (company mentioned in the approval certificate of the indicator). Please note that an approval is **only** possible after the installation of the lightning arrester equipment.

- > 4 platform sizes
- > Weighing range up to 1,5 t

Fields of application: hospitals, dialysis centres and caring institutions. The scales can be applied for weighing human beings, in the logistic department of medical institutions (e.g. weighing of laundry, hospital beds, hospital kitchen), and areas where approved scales are required.

The scales can be combined with the following indicators:

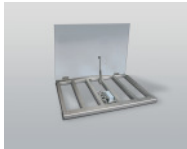


[2790](#)



[3020](#)

[7717](#)



[7718](#)

## \* **New Catalogues and Price Lists**

We would like to inform you that there will be a slight delay in publishing our new catalogues and price lists for 2009. Please excuse the caused inconveniences.

## Curios?

**MADE IN GERMANY**

**Valid until 31<sup>st</sup> March 2009!**

Please keep in mind our **special offer** in February 2009 for the **Indicator 3010 and Approved Personal Scale 7700!**

The Special offer is also available with more details [here](#).



## Contact:

You missed a Newsletter?

Follow the link <http://www.soehnle-professional.com/en/company/news/> and find the archive of our Newsletters.

If you have any questions or require further information, please do not hesitate to contact [us](#)!

Soehnle Professional GmbH & Co. KG  
Manfred-von-Ardenne-Allee 12  
71522 Backnang  
Germany  
Tel.: +49 - 7191 - 3453 - 272  
Fax: +49 - 7191 - 3453 - 211  
Email: [export@soehnle-professional.com](mailto:export@soehnle-professional.com)

[www.soehnle-professional.com](http://www.soehnle-professional.com)