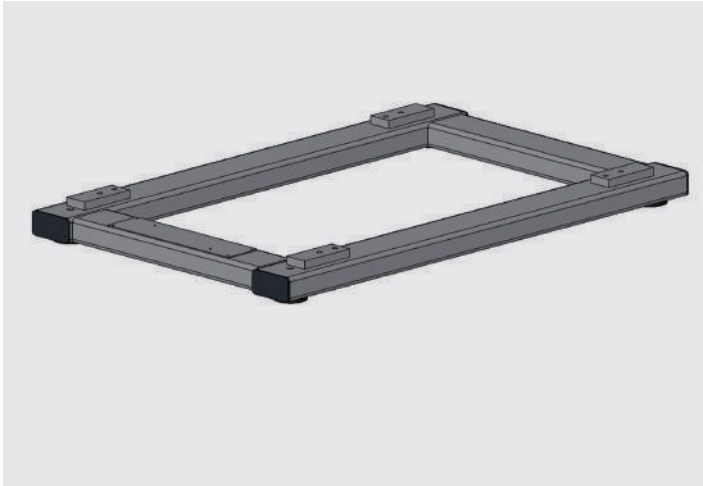
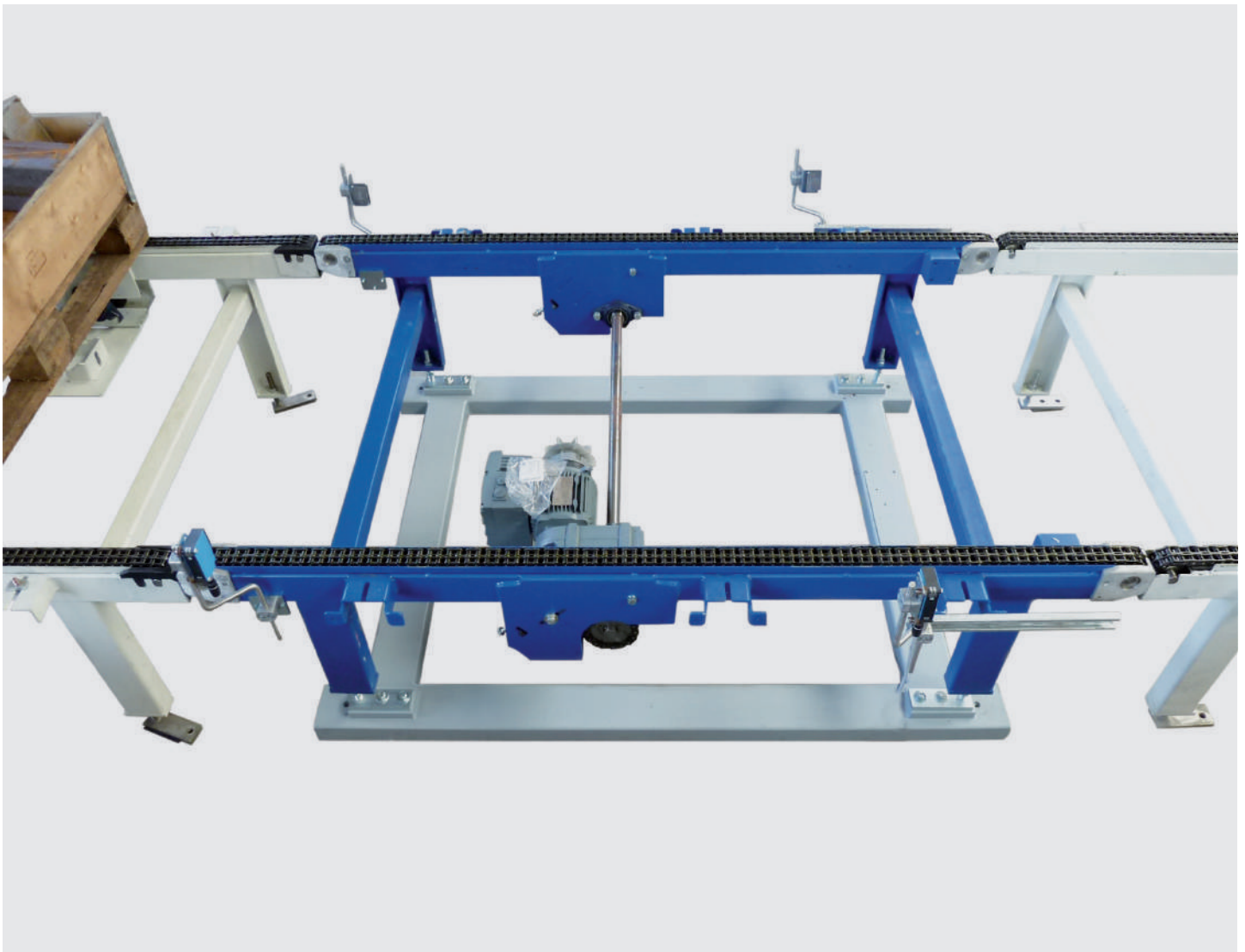


## Weighing frame 2812 *for heavy duty conveyor*



### Characteristics

- > Tube profile frame, painted steel
- > Dimensions from 1,000 x 1,000 mm to over 5,000 mm possible
- > Design height from 95 mm with weld-on plates
- > Weighing ranges up to 6 t possible
- > 4 or 6 load cells integrated in the tube
- > Weld-on plates for conveyor systems assembly, attachment points according to customer specifications
- > Painted RAL 7001 or other
- > On request, including conveyor systems, base frame, floor mounting
- > System can be adjusted and calibrated ex factory



Weighing frame 2812 with installed chain conveyor